

VANDERLOC

30" Single Bath Vanity Kiawah KWS1-30

Features

- Inset look with UV-coated plywood cabinet interior
- 2" square posts on all four corners
- Full height doors with soft close Blum® 110° hinges
- Conversion Varnish finish
- 2" useable shelf below the vanity cabinet
- Hardware size 8-13/16" center to center
- Top and faucet not included
- Plumbing rough in area cut-out detailed on page 2
- Made in the US

Material

- Solid wood, combination core veneers, and medium density fiberboard.
- Wood is a living material, and its beauty is enhanced by natural variations in grain, color, and pattern. No two pieces of wood are exactly the same, and the color will change with age, temperature, and exposure to light.
- The nature of wood grain can cause variations in stain depth. Our expert craftsmen apply paints and stains in a specific sequence to eliminate these variations.

Installation

- Bath Vanity
- Professional Installation Only

Included Products

- Decorative hardware
- Door bumpers

Optional Products

- C-31-SRC.WS Silestone® Quartz Countertop
- C-31-SRC.SH Silestone® Quartz Countertop
- C-31-SRC.NH Silestone® Quartz Countertop
- C-31B Bath Vanity Top Backsplash

Codes/Standards

- EPA TSCA Title VI
- CARB P2

Vanderloc® One-Year Limited Warranty



Image displaying a 36" vanity in Platinum Gray with Satin Gold hardware. Countertop and faucet not included





Available Paint & Hardware Finishes

Color tiles intended for reference only.

Paint Finishes

	.fo French Olive		.pg Platinum Gray
	.hb Hague Blue		.pw Pure White
	.no Noir		.sw Strong White
	.ob Off Black		.tt Taos Taupe

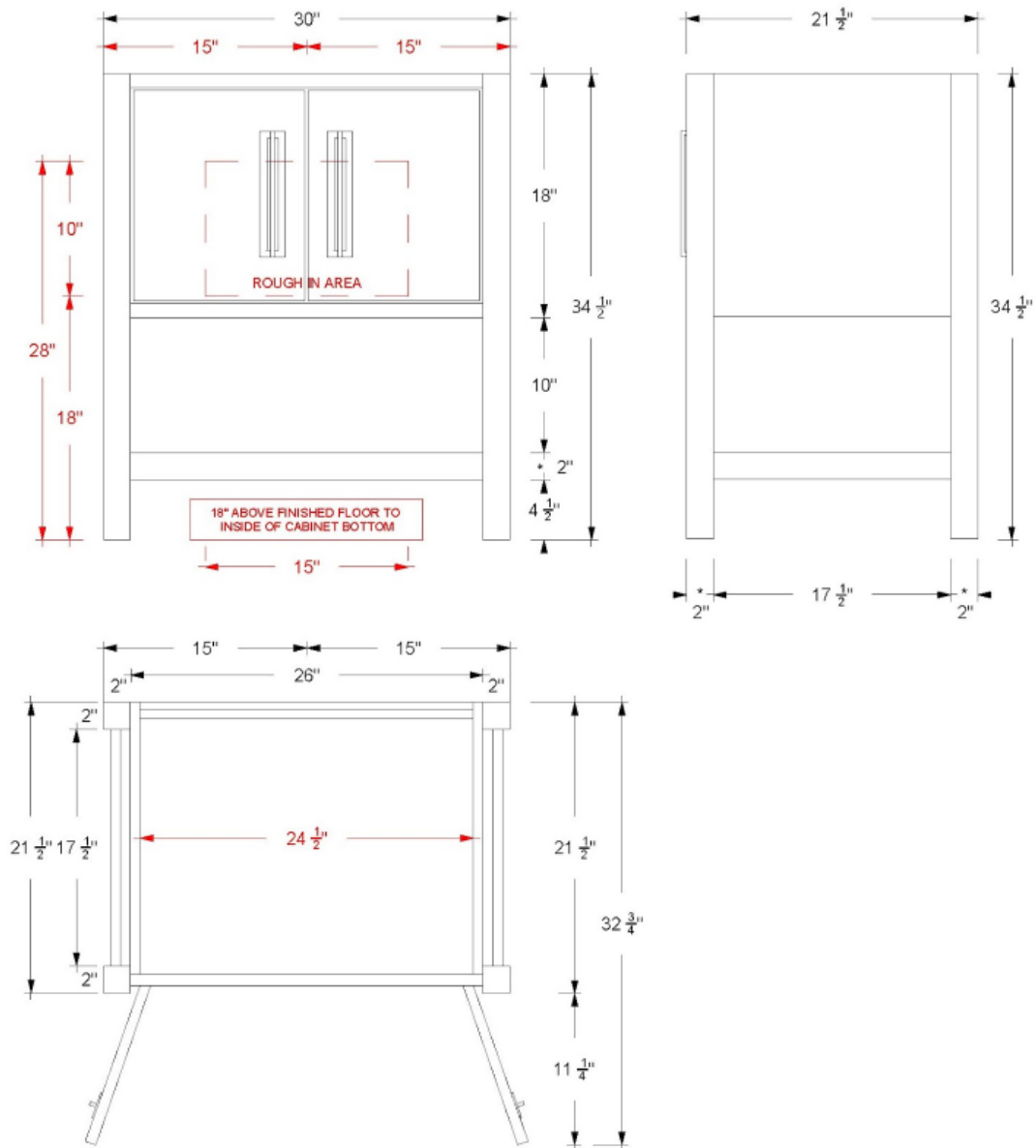
Hardware

	.ch Polished Chrome
	.sg Satin Gold
	.sn Satin Nickel
	.mb Matte Black



VANDERLOC

30" Single Bath Vanity Kiawah KWS1-30



Technical Information

All product dimensions are nominal.

- Installation: Bath Vanity
- Number of doors: 2

Notes

Install this product according to the installation instructions.



VANDERLOC

36" Single Bath Vanity Kiawah KWS1-36

Features

- Inset construction with UV-coated plywood cabinet interior
- Full height doors with soft close Blum® 110° hinges
- Conversion Varnish finish
- 2" useable shelf below the vanity cabinet
- Hardware size 8-13/16" center to center
- Top and faucet not included
- Plumbing rough in area cut-out detailed on page 2
- Made in the US

Material

- Solid wood, combination core veneers, and medium density fiberboard.
- Wood is a living material, and its beauty is enhanced by natural variations in grain, color, and pattern. No two pieces of wood are exactly the same, and the color will change with age, temperature, and exposure to light.
- The nature of wood grain can cause variations in stain depth. Our expert craftsmen apply paints and stains in a specific sequence to eliminate these variations.

Installation

- Bath Vanity
- Professional Installation Only

Included Products

- Decorative hardware
- Door bumpers

Optional Products

- C-37-SRC.WS Silestone® Quartz Countertop
- C-37-SRC.SH Silestone® Quartz Countertop
- C-37-SRC.NH Silestone® Quartz Countertop
- C-37B Bath Vanity Top Backsplash

Codes/Standards

- EPA TSCA Title VI
- CARB P2

Vanderloc® One-Year Limited Warranty



Image displaying a 36" vanity in French Olive with Satin Gold hardware. Countertop and faucet not included





Available Paint & Hardware Finishes

Color tiles intended for reference only.

Paint Finishes

	.fo French Olive		.pg Platinum Gray
	.hb Hague Blue		.pw Pure White
	.no Noir		.sw Strong White
	.ob Off Black		.tt Taos Taupe

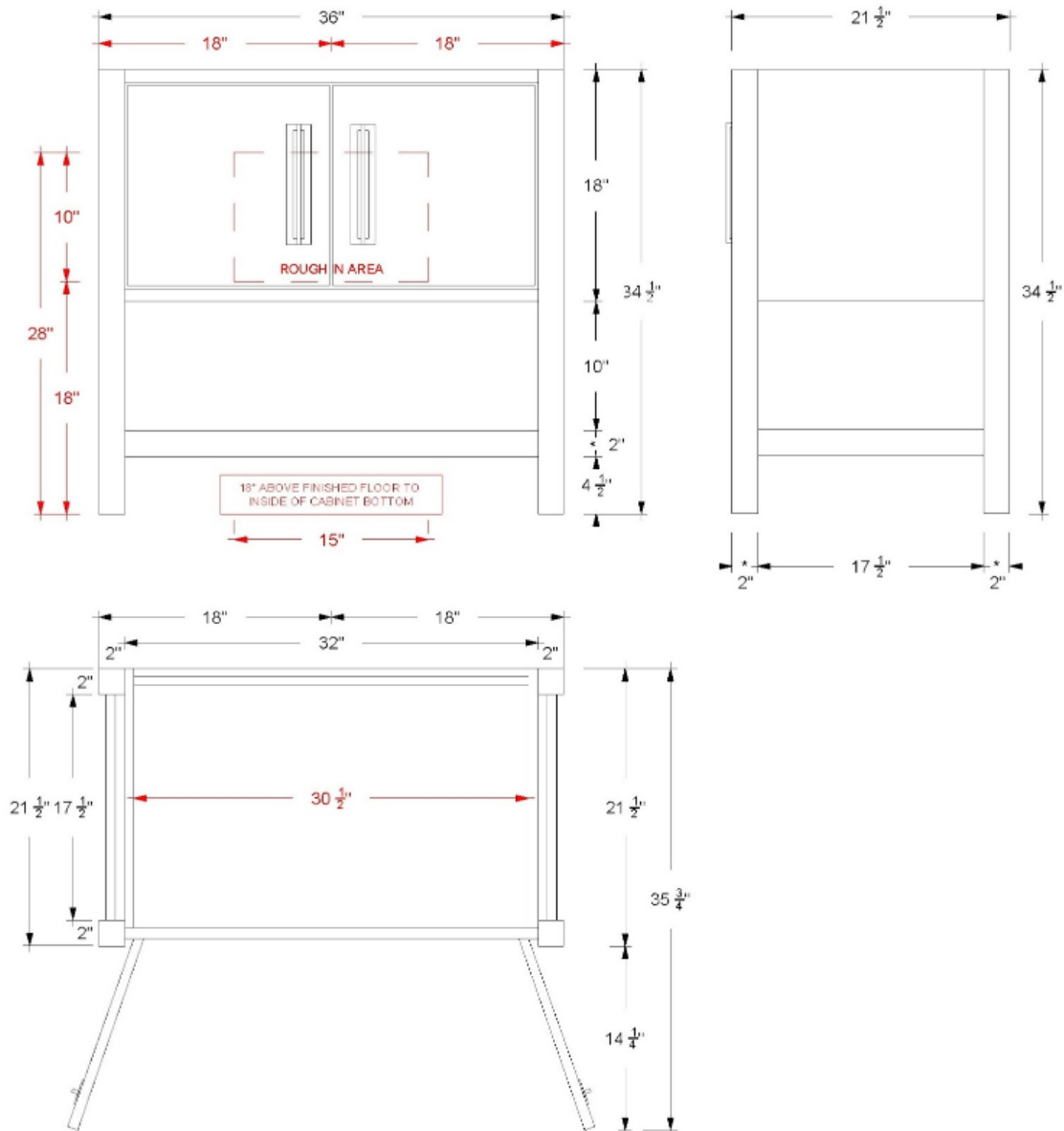
Hardware

	.ch Polished Chrome
	.sg Satin Gold
	.sn Satin Nickel
	.mb Matte Black



VANDERLOC

36" Single Bath Vanity Kiawah KWS1-36



Technical Information

All product dimensions are nominal.

- Installation: Bath Vanity
- Number of doors: 2

Notes

Install this product according to the installation instructions.



VANDERLOC

42" Single Bath Vanity Kiawah KWS1-42

Features

- Inset construction with UV-coated plywood cabinet interior
- Full height doors with soft close Blum® 110° hinges
- Conversion Varnish finish
- 2" useable shelf below the vanity cabinet
- Hardware size 8-13/16" center to center
- Top and faucet not included
- Plumbing rough in area cut-out detailed on page 2
- Made in the US

Material

- Solid wood, combination core veneers, and medium density fiberboard.
- Wood is a living material, and its beauty is enhanced by natural variations in grain, color, and pattern. No two pieces of wood are exactly the same, and the color will change with age, temperature, and exposure to light.
- The nature of wood grain can cause variations in stain depth. Our expert craftsmen apply paints and stains in a specific sequence to eliminate these variations.

Installation

- Bath Vanity
- Professional Installation Only

Included Products

- Decorative hardware
- Door bumpers

Optional Products

- C-43-SRC.WS Silestone® Quartz Countertop
- C-43-SRC.SH Silestone® Quartz Countertop
- C-43-SRC.NH Silestone® Quartz Countertop
- C-43B Bath Vanity Top Backsplash

Codes/Standards

- EPA TSCA Title VI
- CARB P2

Vanderloc® One-Year Limited Warranty



Image displaying a 36" vanity in Off Black with Satin Gold hardware. Countertop and faucet not included





Available Paint & Hardware Finishes

Color tiles intended for reference only.

Paint Finishes

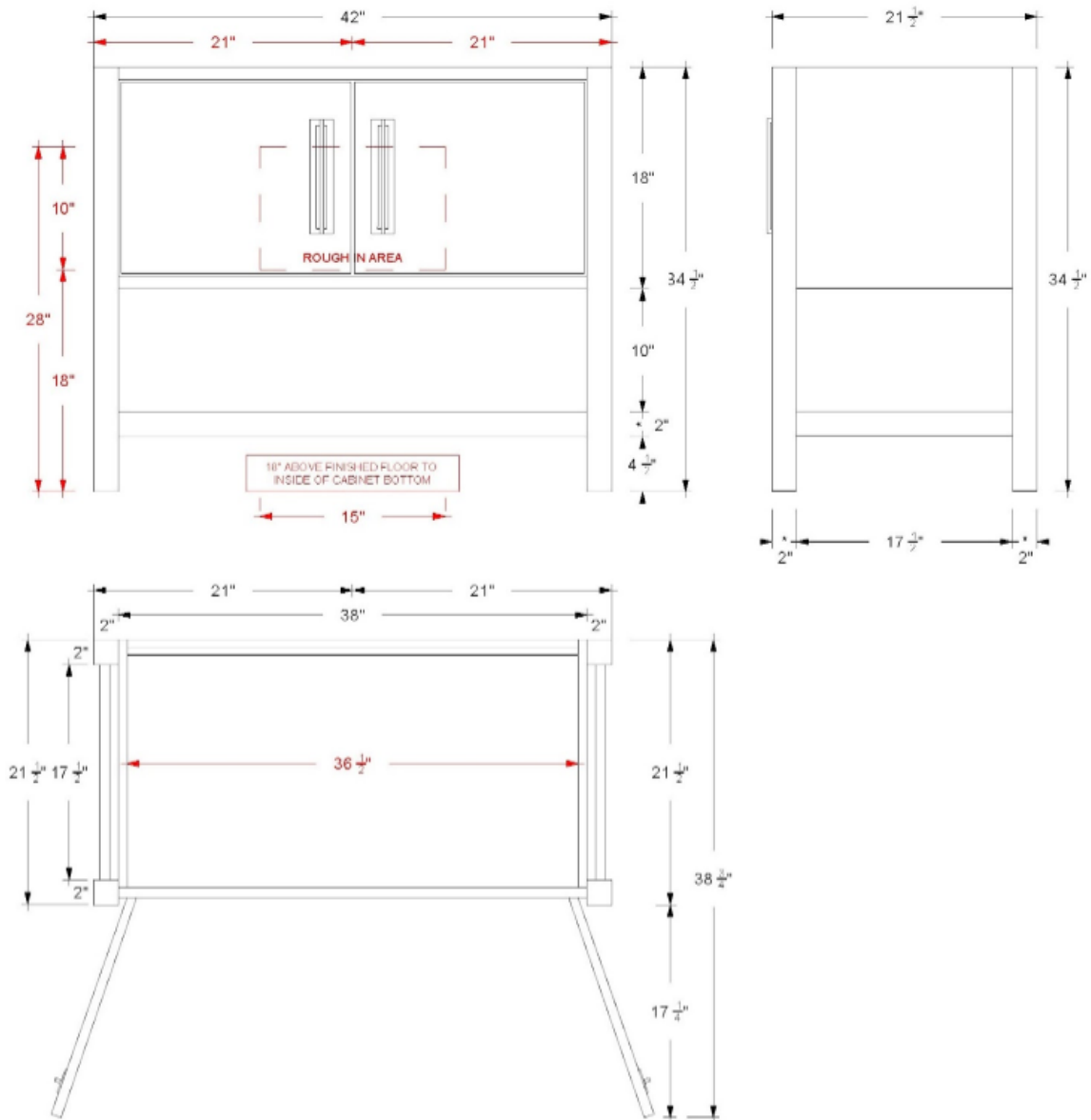
	.fo French Olive		.pg Platinum Gray
	.hb Hague Blue		.pw Pure White
	.no Noir		.sw Strong White
	.ob Off Black		.tt Taos Taupe

Hardware

	.ch Polished Chrome
	.sg Satin Gold
	.sn Satin Nickel
	.mb Matte Black

VANDERLOC

42" Single Bath Vanity Kiawah KWS1-42



Technical Information

All product dimensions are nominal.

- Installation: Bath Vanity
- Number of doors: 2

Notes

Install this product according to the installation instructions.



VANDERLOC

48" Single Bath Vanity Kiawah KWS1-48

Features

- Inset construction with UV-coated plywood cabinet interior
- Full height doors with soft close Blum® 110° hinges
- Conversion Varnish finish
- 2" useable shelf below the vanity cabinet
- Hardware size 8-13/16" center to center
- Top and faucet not included
- Plumbing rough in area cut-out detailed on page 2
- Made in the US

Material

- Solid wood, combination core veneers, and medium density fiberboard.
- Wood is a living material, and its beauty is enhanced by natural variations in grain, color, and pattern. No two pieces of wood are exactly the same, and the color will change with age, temperature, and exposure to light.
- The nature of wood grain can cause variations in stain depth. Our expert craftsmen apply paints and stains in a specific sequence to eliminate these variations.

Installation

- Bath Vanity
- Professional Installation Only

Included Products

- Decorative hardware
- Door bumpers

Optional Products

- C-49-SRC.WS Silestone® Quartz Countertop
- C-49-SRC.SH Silestone® Quartz Countertop
- C-49-SRC.NH Silestone® Quartz Countertop
- C-49B Bath Vanity Top Backsplash

Codes/Standards

- EPA TSCA Title VI
- CARB P2

Vanderloc® One-Year Limited Warranty



Image displaying a 36" vanity in Strong White with Satin Gold hardware. Countertop and faucet not included





Available Paint & Hardware Finishes

Color tiles intended for reference only.

Paint Finishes

	.fo French Olive		.pg Platinum Gray
	.hb Hague Blue		.pw Pure White
	.no Noir		.sw Strong White
	.ob Off Black		.tt Taos Taupe

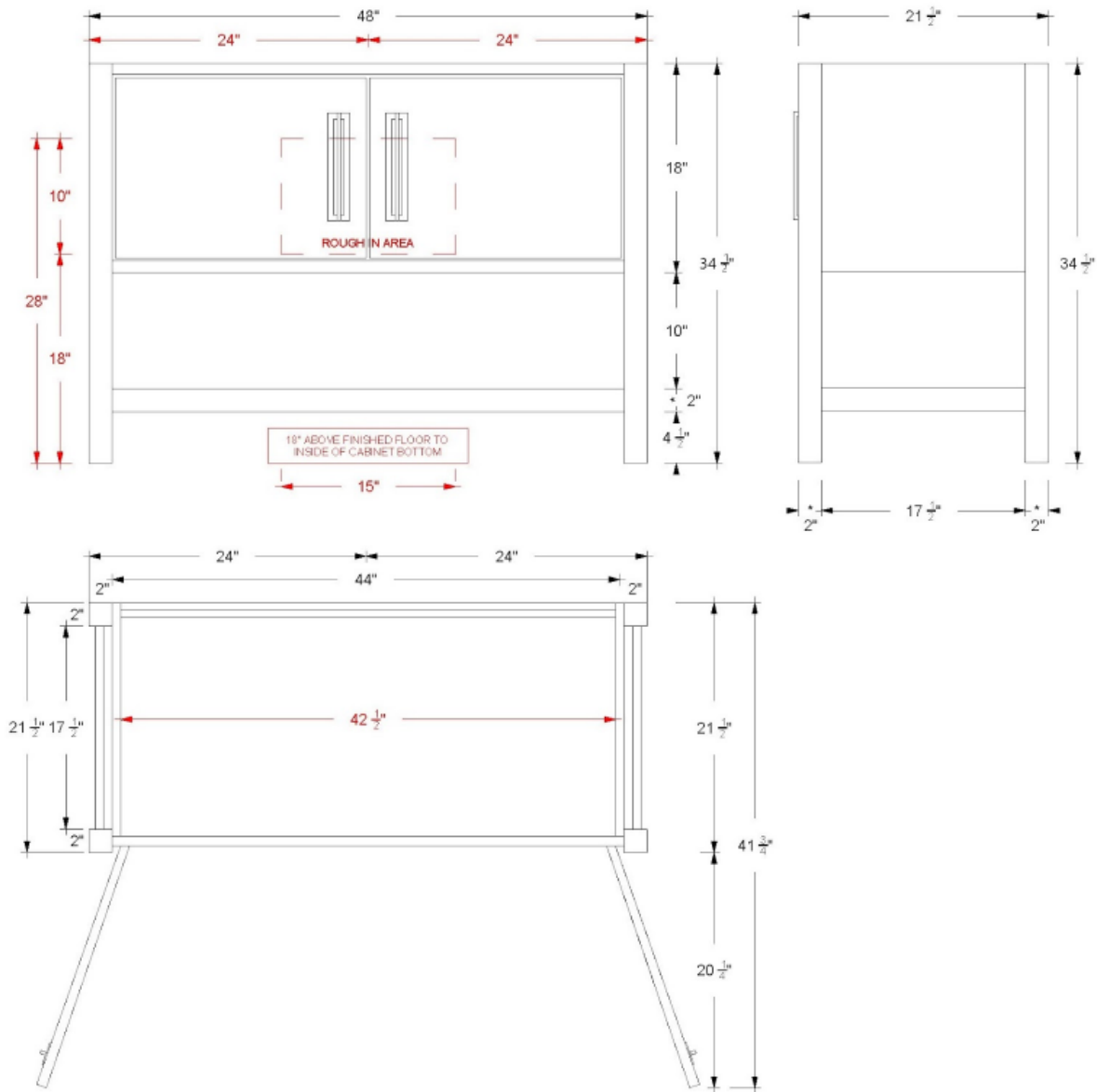
Hardware

	.ch Polished Chrome
	.sg Satin Gold
	.sn Satin Nickel
	.mb Matte Black



VANDERLOC

48" Single Bath Vanity Kiawah KWS1-48



Technical Information

All product dimensions are nominal.

- Installation: Bath Vanity
- Number of doors: 2

Notes

Install this product according to the installation instructions.

