

VANDERLOC

30" 2-Drawer Single Bath Vanity

Kiawah
KWS2-30

Features

- Inset look with UV-coated plywood cabinet interior
- 2" square posts on all four corners
- 2 u-shaped fully functional soft close drawer
- Conversion Varnish finish
- 2" useable shelf below the vanity cabinet
- Hardware size 8-13/16" center to center
- Top and faucet not included
- Plumbing rough in area cut-out detailed on page 2
- Made in the US

Material

- Solid wood, combination core veneers, and medium density fiberboard.
- Wood is a living material, and its beauty is enhanced by natural variations in grain, color, and pattern. No two pieces of wood are exactly the same, and the color will change with age, temperature, and exposure to light.
- The nature of wood grain can cause variations in stain depth. Our expert craftsmen apply paints and stains in a specific sequence to eliminate these variations.

Installation

- Bath Vanity
- Professional Installation Only

Included Products

- Decorative hardware
- Door bumpers

Optional Products

- C-31-SRC.WS Silestone® Quartz Countertop
- C-31-SRC.SH Silestone® Quartz Countertop
- C-31-SRC.NH Silestone® Quartz Countertop
- C-31B Bath Vanity Top Backsplash

Codes/Standards

- EPA TSCA Title VI
- CARB P2

Vanderloc® One-Year Limited Warranty



Image displaying a 36" vanity in Hague Blue with Satin Gold hardware. Countertop and faucet not included




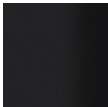
Available Paint & Hardware Finishes

Color tiles intended for reference only.

Paint Finishes

	.fo French Olive		.pg Platinum Gray
	.hb Hague Blue		.pw Pure White
	.no Noir		.sw Strong White
	.ob Off Black		.tt Taos Taupe

Hardware

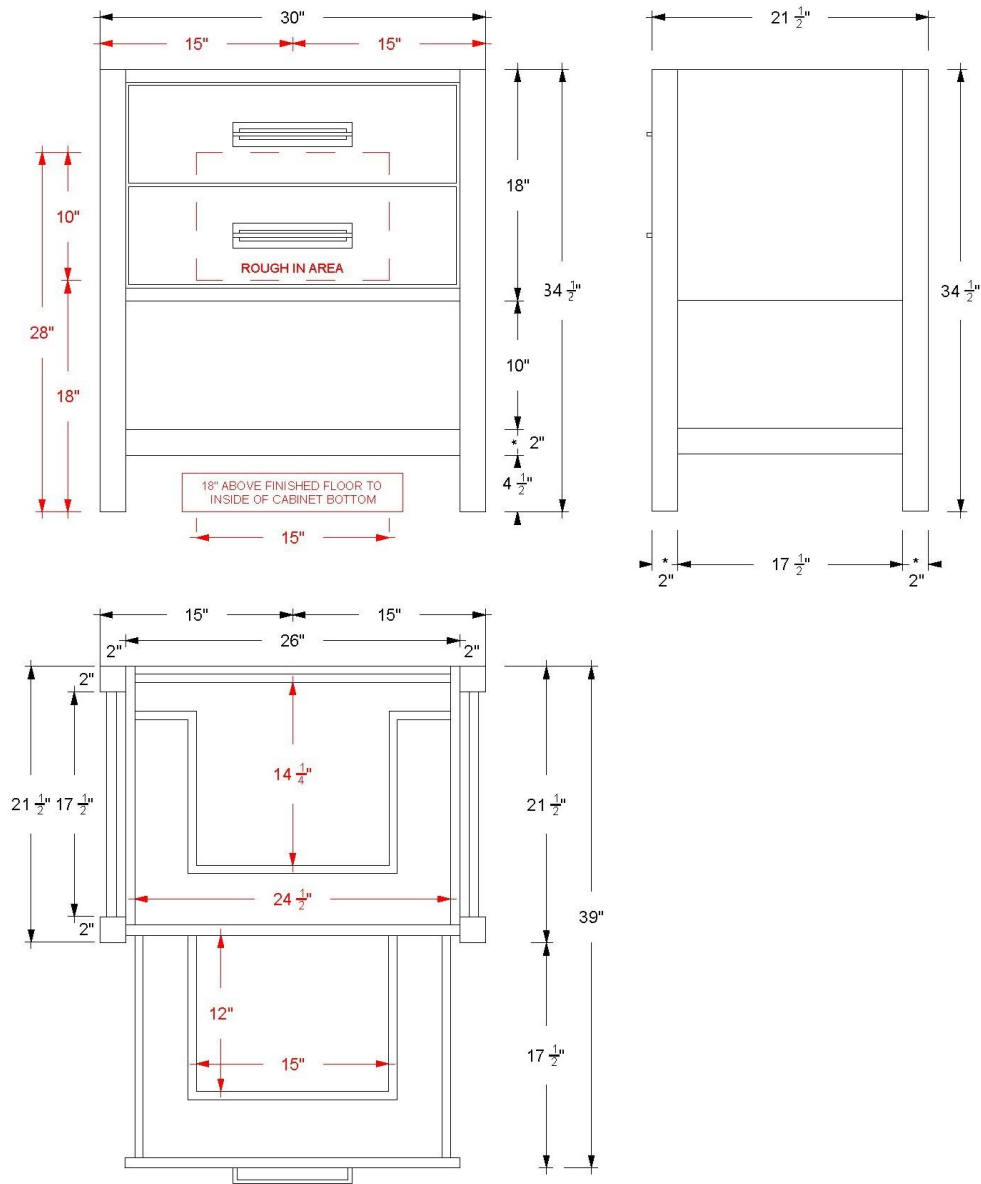
	.ch Polished Chrome
	.sg Satin Gold
	.sn Satin Nickel
	.mb Matte Black



VANDERLOC

30" 2-Drawer Single Bath Vanity

Kiawah
KWS2-30



Technical Information

All product dimensions are nominal.

- Installation: Bath Vanity
- Number of drawers: 2

Notes

Install this product according to the installation instructions.



VANDERLOC

36" 2-Drawer Single Bath Vanity

Kiawah
KWS2-36

Features

- Inset look with UV-coated plywood cabinet interior
- 2" square posts on all four corners
- 2 u-shaped fully functional soft close drawer
- Conversion Varnish finish
- 2" useable shelf below the vanity cabinet
- Hardware size 8-13/16" center to center
- Top and faucet not included
- Plumbing rough in area cut-out detailed on page 2
- Made in the US

Material

- Solid wood, combination core veneers, and medium density fiberboard.
- Wood is a living material, and its beauty is enhanced by natural variations in grain, color, and pattern. No two pieces of wood are exactly the same, and the color will change with age, temperature, and exposure to light.
- The nature of wood grain can cause variations in stain depth. Our expert craftsmen apply paints and stains in a specific sequence to eliminate these variations.

Installation

- Bath Vanity
- Professional Installation Only

Included Products

- Decorative hardware
- Door bumpers

Optional Products

- C-37-SRC.WS Silestone® Quartz Countertop
- C-37-SRC.SH Silestone® Quartz Countertop
- C-37-SRC.NH Silestone® Quartz Countertop
- C-37B Bath Vanity Top Backsplash

Codes/Standards

- EPA TSCA Title VI
- CARB P2

Vanderloc® One-Year Limited Warranty



Image displaying a 36" vanity in Noir with Satin Gold hardware. Countertop and faucet not included





Available Paint & Hardware Finishes

Color tiles intended for reference only.

Paint Finishes

	.fo French Olive		.pg Platinum Gray
	.hb Hague Blue		.pw Pure White
	.no Noir		.sw Strong White
	.ob Off Black		.tt Taos Taupe

Hardware

	.ch Polished Chrome
	.sg Satin Gold
	.sn Satin Nickel
	.mb Matte Black

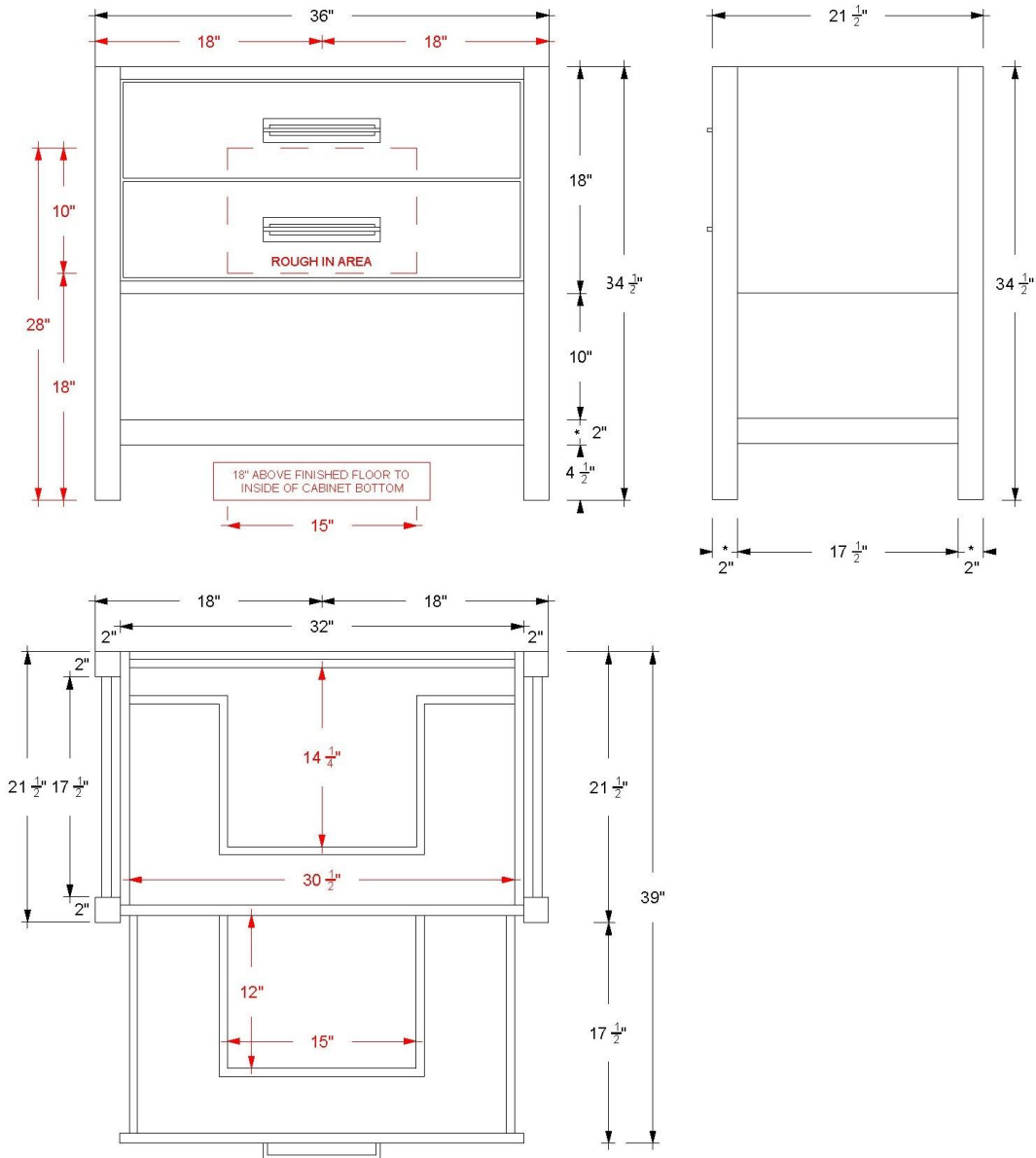


VANDERLOC

36" 2-Drawer Single Bath Vanity

Kiawah

KWS2-36



Technical Information

All product dimensions are nominal.

- Installation: Bath Vanity
- Number of drawers: 2

Notes

Install this product according to the installation instructions.



VANDERLOC

42" 2-Drawer Single Bath Vanity

Kiawah
KWS2-42

Features

- Inset look with UV-coated plywood cabinet interior
- 2" square posts on all four corners
- 2 u-shaped fully functional soft close drawer
- Conversion Varnish finish
- 2" useable shelf below the vanity cabinet
- Hardware size 8-13/16" center to center
- Top and faucet not included
- Plumbing rough in area cut-out detailed on page 2
- Made in the US

Material

- Solid wood, combination core veneers, and medium density fiberboard.
- Wood is a living material, and its beauty is enhanced by natural variations in grain, color, and pattern. No two pieces of wood are exactly the same, and the color will change with age, temperature, and exposure to light.
- The nature of wood grain can cause variations in stain depth. Our expert craftsmen apply paints and stains in a specific sequence to eliminate these variations.

Installation

- Bath Vanity
- Professional Installation Only

Included Products

- Decorative hardware
- Door bumpers

Optional Products

- C-43-SRC.WS Silestone® Quartz Countertop
- C-43-SRC.SH Silestone® Quartz Countertop
- C-43-SRC.NH Silestone® Quartz Countertop
- C-43B Bath Vanity Top Backsplash

Codes/Standards

- EPA TSCA Title VI
- CARB P2

Vanderloc® One-Year Limited Warranty


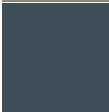





Image displaying a 36" vanity in Pure White with Satin Gold hardware. Countertop and faucet not included

Available Paint & Hardware Finishes





Color tiles intended for reference only.

Paint Finishes

	.fo French Olive
	.hb Hague Blue
	.no Noir
	.ob Off Black

	.pg Platinum Gray
	.pw Pure White
	.sw Strong White
	.tt Taos Taupe

Hardware

	.ch Polished Chrome
	.sg Satin Gold
	.sn Satin Nickel
	.mb Matte Black

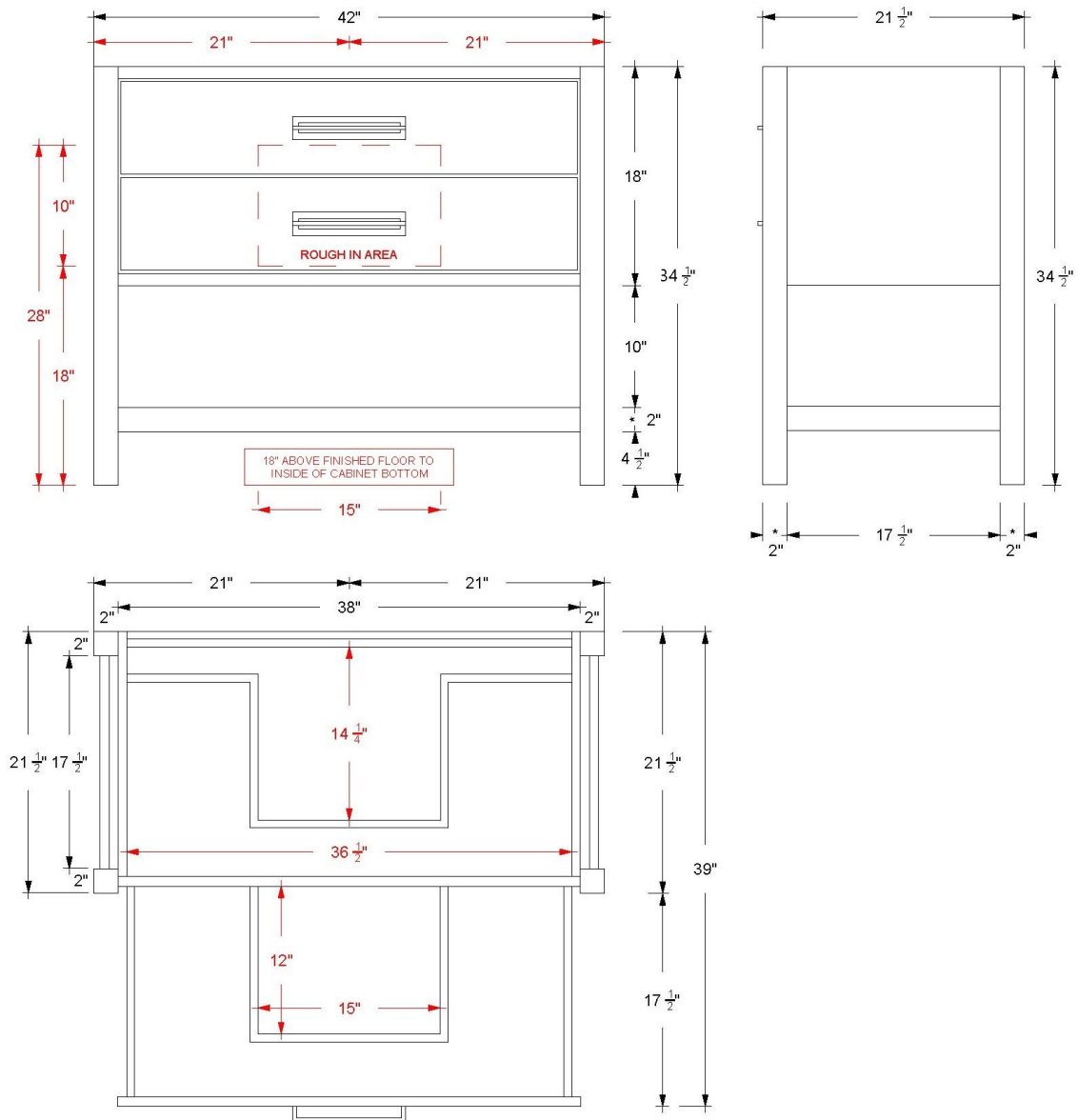


VANDERLOC

42" 2-Drawer Single Bath Vanity

Kiawah

KWS2-42



Technical Information

All product dimensions are nominal.

- Installation: Bath Vanity
- Number of drawers: 2

Notes

Install this product according to the installation instructions.



VANDERLOC

48" 2-Drawer Single Bath Vanity

Kiawah
KWS2-48

Features

- Inset look with UV-coated plywood cabinet interior
- 2" square posts on all four corners
- 2 u-shaped fully functional soft close drawer
- Conversion Varnish finish
- 2" useable shelf below the vanity cabinet
- Hardware size 8-13/16" center to center
- Top and faucet not included
- Plumbing rough in area cut-out detailed on page 2
- Made in the US

Material

- Solid wood, combination core veneers, and medium density fiberboard.
- Wood is a living material, and its beauty is enhanced by natural variations in grain, color, and pattern. No two pieces of wood are exactly the same, and the color will change with age, temperature, and exposure to light.
- The nature of wood grain can cause variations in stain depth. Our expert craftsmen apply paints and stains in a specific sequence to eliminate these variations.

Installation

- Bath Vanity
- Professional Installation Only

Included Products

- Decorative hardware
- Door bumpers

Optional Products

- C-43-SRC.WS Silestone® Quartz Countertop
- C-43-SRC.SH Silestone® Quartz Countertop
- C-43-SRC.NH Silestone® Quartz Countertop
- C-43B Bath Vanity Top Backsplash

Codes/Standards

- EPA TSCA Title VI
- CARB P2

Vanderloc® One-Year Limited Warranty



Image displaying a 36" vanity in Taos Taupe with Satin Gold hardware. Countertop and faucet not included




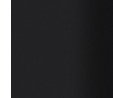
Available Paint & Hardware Finishes

Color tiles intended for reference only.

Paint Finishes

	.fo French Olive		.pg Platinum Gray
	.hb Hague Blue		.pw Pure White
	.no Noir		.sw Strong White
	.ob Off Black		.tt Taos Taupe

Hardware

	.ch Polished Chrome
	.sg Satin Gold
	.sn Satin Nickel
	.mb Matte Black

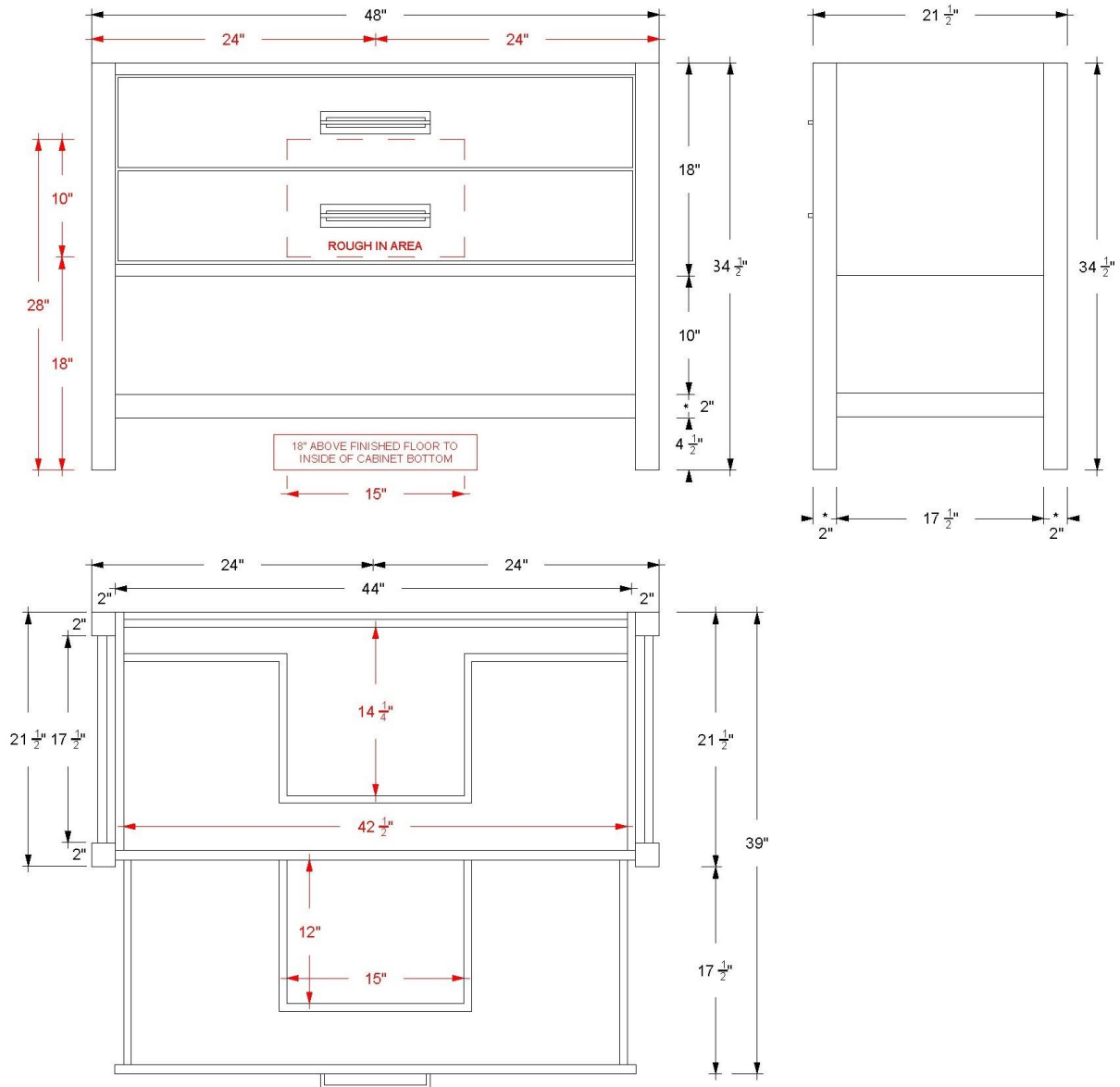


VANDERLOC

48" 2-Drawer Single Bath Vanity

Kiawah

KWS2-48



Technical Information

All product dimensions are nominal.

- Installation: Bath Vanity
- Number of drawers: 2

Notes

Install this product according to the installation instructions.

