

VANDERLOC

60" Double Bath Vanity Rift White Oak RWD5-60

Features

- Inset construction with UV coated plywood cabinet interior
- Full height doors with softclose Blum® 110° hinges
- Conversion Varnish finish
- 8" Tall metal base with built-in leg levelers and a 3/8" shadow gap between the vanity and the metal base
- Hardware size 8-13/16" & 3-3/4" center to center
- Top and faucet not included
- Plumbing rough in area cut-out detailed on page 2
- Made in the US

Material

- Solid wood and Rift Oak veneers.
- Wood is a living material, and its beauty is enhanced by natural variations in grain, color, and pattern. No two pieces of wood are exactly the same, and the color will change with age, temperature, and exposure to light.
- The nature of wood grain can cause variations in stain depth. Our expert craftsmen hand-apply the stain to blend these variations.

Installation

- Bath Vanity

Included Products

- Decorative door hardware
- Leg leveling hardware
- Door bumpers

Optional Products

- C-61-DRO.WS Silestone® Quartz Countertop
- C-61-DRO.SH Silestone® Quartz Countertop
- C-61-DRO.NH Silestone® Quartz Countertop
- C-61B Bath Vanity Top Backsplash

Codes/Standards

- EPA TSCA Title VI
- CARB P2

Vanderloc® One-Year Limited Warranty

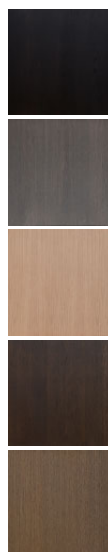


Image displaying a 60" vanity in Gray Weathered with Satin Gold hardware. Countertop and faucet not included

Available Wood & Hardware Finishes

Color tiles intended for reference only.

Wood Finish



.cb
Classic Black

.gw
Gray Weathered

.nw
Natural Weathered

.rb
Rich Brown

.sm
Smoked Modern

Hardware



.sg
Satin Gold

.mb
Matte Black

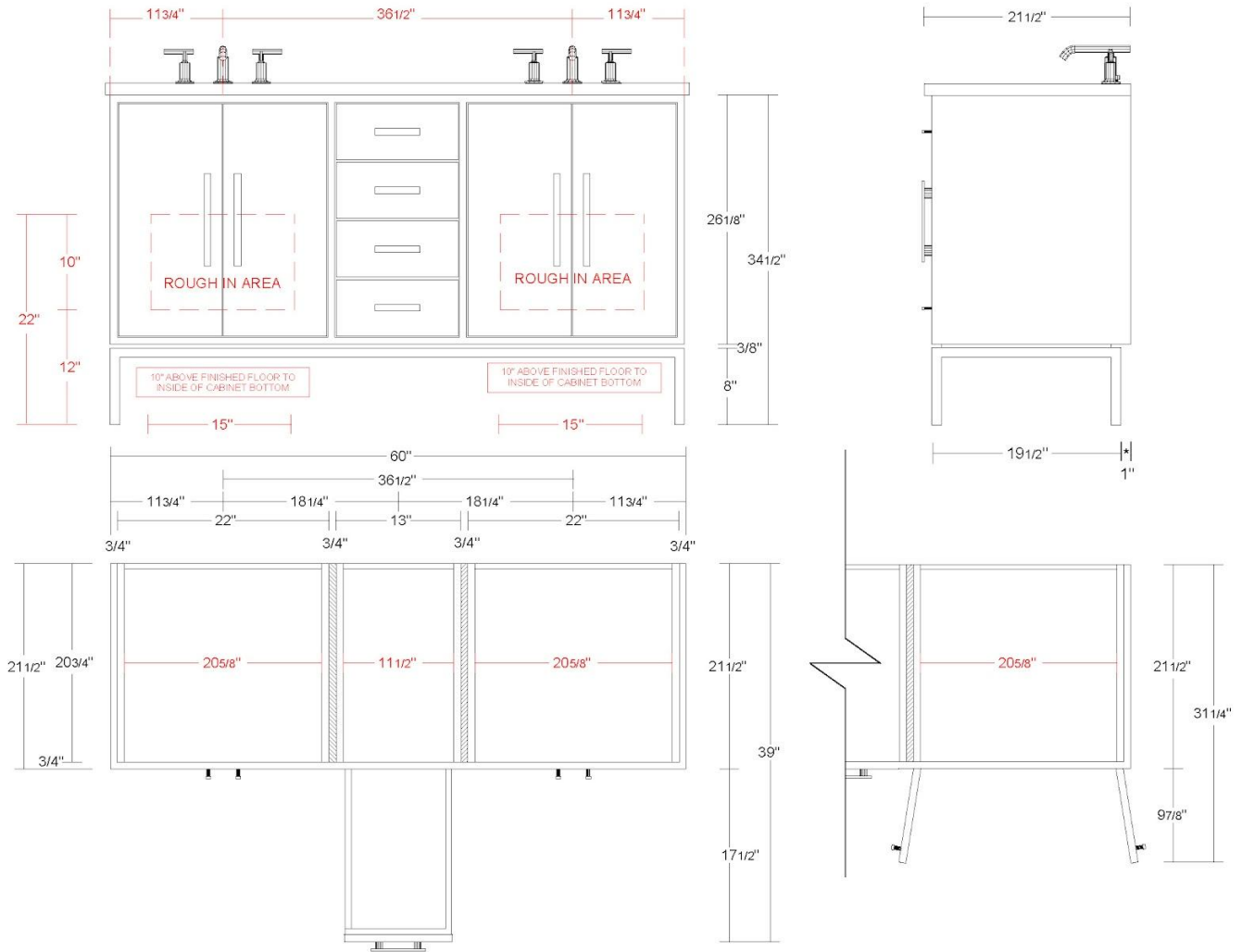
.sn
Satin Nickel

.ch
Polished Chrome



VANDERLOC

60" Double Bath Vanity Rift White Oak RWD5-60



Technical Information

All product dimensions are nominal.

- Installation: Bath Vanity
- Number of doors: 4
- Number of drawers: 4

Notes

Install this product according to the installation instructions.

Vanderloc® reserves the right to make revisions without notice to product specifications. For the most current Specification Sheet, go to www.vanderloc.com



VANDERLOC

72" Double Bath Vanity Rift White Oak RWD5-72

Features

- Inset construction with UV coated plywood cabinet interior
- Full height doors with softclose Blum® 110° hinges
- Conversion Varnish finish
- 8" Tall metal base with built-in leg levelers and a 3/8" shadow gap between the vanity and the metal base
- Hardware size 8-13/16" & 3-3/4" center to center
- Top and faucet not included
- Plumbing rough in area cut-out detailed on page 2
- Made in the US

Material

- Solid wood and Rift Oak veneers.
- Wood is a living material, and its beauty is enhanced by natural variations in grain, color, and pattern. No two pieces of wood are exactly the same, and the color will change with age, temperature, and exposure to light.
- The nature of wood grain can cause variations in stain depth. Our expert craftsmen hand-apply the stain to blend these variations.

Installation

- Bath Vanity

Included Products

- Decorative door hardware
- Leg leveling hardware
- Door bumpers

Optional Products

- C-73-DRO.WS Silestone® Quartz Countertop
- C-73-DRO.SH Silestone® Quartz Countertop
- C-73-DRO.NH Silestone® Quartz Countertop
- C-73B Bath Vanity Top Backsplash

Codes/Standards

- EPA TSCA Title VI
- CARB P2

Vanderloc® One-Year Limited Warranty



Image displaying a 60" vanity in Natural Weathered with Satin Gold hardware. Countertop and faucet not included





Available Wood & Hardware Finishes

Color tiles intended for reference only.

Wood Finish

	.cb Classic Black
	.gw Gray Weathered
	.nw Natural Weathered
	.rb Rich Brown
	.sm Smoked Modern

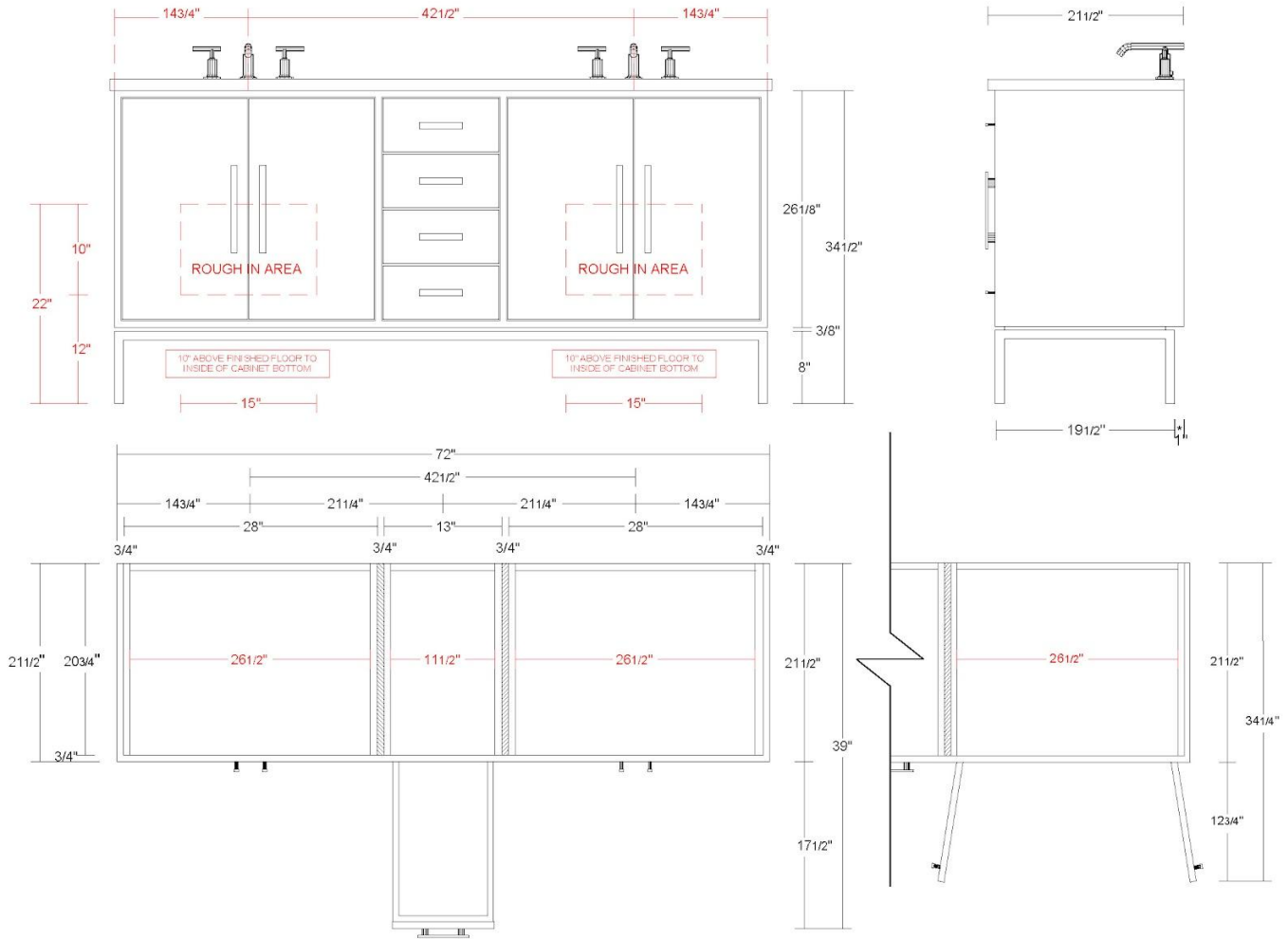
Hardware

	.sg Satin Gold
	.mb Matte Black
	.sn Satin Nickel
	.ch Polished Chrome



VANDERLOC

72" Double Bath Vanity Rift White Oak RWD5-72



Technical Information

All product dimensions are nominal.

- Installation: Bath Vanity
- Number of doors: 4
- Number of drawers: 4

Notes

Install this product according to the installation instructions.

